

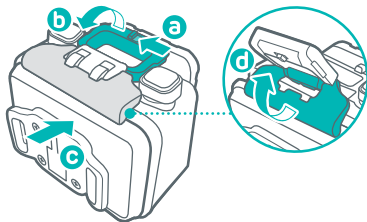
Thank you for choosing the 4GEE ACTION CAM.

This guide describes how to set up your 4GEE ACTION CAM, Viewfinder Watch and get started with live streaming.

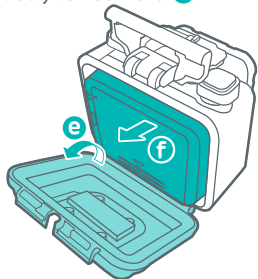
For a full guide, please visit ee.co.uk/camwelcome

Set up your camera

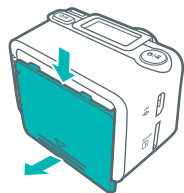
1. Push to release the lock **a** and simultaneously lift up the latch **b**. Then push the waterproof cover **c** and flip the latch **d** to release the cover.



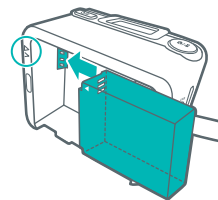
2. Open the waterproof cover **e** and take out your camera **f**.



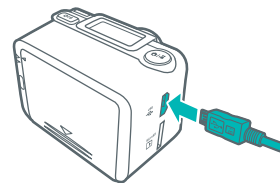
3. Slide down to remove the back cover of your camera.



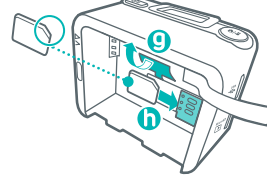
5. Align the mark on the battery with the one on the camera, and install the battery.



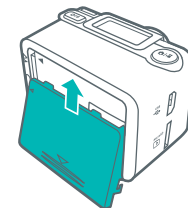
7. To charge your camera, insert the smaller end of the USB cable into your camera's micro USB port.



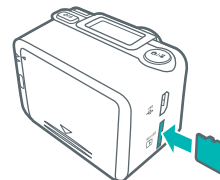
4. Lift up the protective rubber flap **g**, and slip in the nano-SIM card with the cut corner at the top right and its metal contacts facing down **h** until it clicks into place.



6. Replace the back cover.

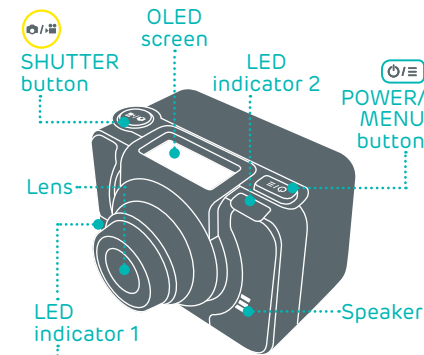


8. **(Optional)** If you have a MicroSD card, insert it into the MicroSD card slot until it clicks into place.

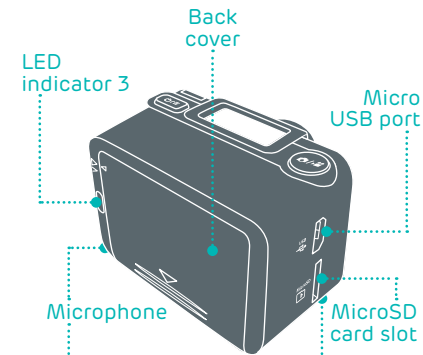


Get to know your camera

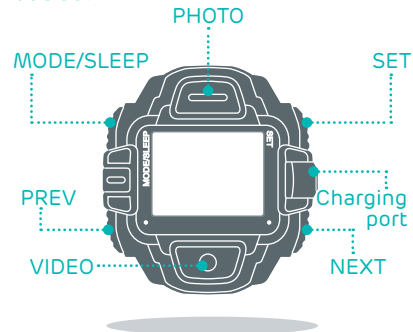
Front view



Rear view



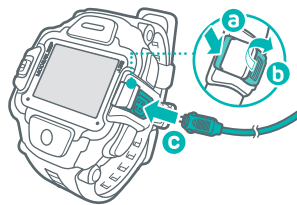
Get to know your Viewfinder Watch



- To pair to the camera, go to **Pairing** in camera menu and select **WATCH**.
- Press and hold PHOTO and VIDEO together to turn off pairing with your camera and switch on WiFi pairing to **MOBILE**.

Charge your watch


Press the cover lock **a** to release the protective cover. Flip open the protective cover **b**, and insert the watch charging cable (arrow side up) into the charging port **c**.

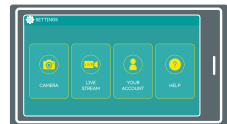


- To select viewfinder or clock, press MODE/SLEEP repeatedly.
- When in clock mode, press PREV repeatedly to go through clock functions.
- To set current date and time, press and hold SET, then press VIDEO to make changes and NEXT to scroll. Confirm by pressing SET again.

Set up your account to live stream to Skeegle, your private video sharing service

A. For Pay monthly customers

1. Download the 4GEE Action Cam app on to your mobile phone from the App Store or Google Play™ store.
2. Switch on the camera. Then on your phone, go to WiFi settings, find and select 4GEE Action Cam and enter the default password (00000000) to pair your phone to the camera.
3. Back in the app, select  **SETTINGS > LIVE STREAM** and follow the steps to create your live streaming account.



4. To complete the live streaming set up, download the Skeegle app* on to your phone from the App Store or Google Play™ store, and follow the instructions within the Skeegle app to select and manage who you share your video streams with.

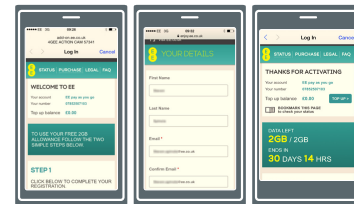


*Skeegle is a private video sharing service where your live videos will stream to.

B. For Pay as you go customers (activating your SIM)

1. Download the 4GEE Action Cam app on to your mobile phone from the App Store or Google Play™ store.
2. Switch on the camera. Then on your phone, go to WiFi settings, find and select 4GEE Action Cam and enter the default password (00000000) to pair your phone to the camera.
3. You will be automatically redirected to a web page to register your SIM and activate your data add-on. If this doesn't happen automatically, just open your phone's browser and visit add-on.ee.co.uk/status.

Follow the instructions on screen to register and activate your 4GEE ACTION CAM SIM.



4. Go back to the 4GEE Action Cam app and follow steps 3-4 for Pay monthly customers.

QUICK START GUIDE